

Right now we are installing wiring, boxes, and light fixtures for our electrical rough in. Bring wire cutters, drill and hammer and 6' ladder!

Our next Saturday Work day will be March 11th.



Hang On Help is on the Way!

In partnership with Grasp International a mission team will build our deck March 27-30. **We need your help with lunch Mon. Tue. And Thru.**

Can you Help!
Use a communication card or talk to Barbara Pabst!

We can always use more helpers! If you will help use a communication card or contact **Brandy Dixon!**

Care Givers:
3.5.17 Pam/Wanda
3.12.17 Audrey/Barbara



350 Cake Mixes!

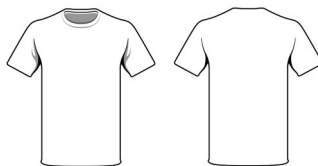
Campus Crop is celebrating their 1st birthday. You have got to have a cake to celebrate and share it with friends. So, they are challenging us to share with the average number of families served by



God's Mission House

in Springfield, a local food pantry, **350 boxes of cake mix by the end of February!** We have 100 given or over 25% of our goal!

Today is the last Day!



designs. Ms. Trisha will share the specific information that needs to be included in the design next Sunday.

The Crop will be designing t-shirts for **God's Mission House**. The deadline is **March 12** for the completed



- Sunday**
- Tuesday**
- Wednesday**
- Thursday**
- Saturday**

- Crossroads gathers to worship**.....10am @ Tabernacle
- Coffee Break Prayer.....10am @ Archer Home
- Real Band Practice.....7pm @ Tabernacle
- Crossroads Men.....7pm @ Tabernacle
- Raising the building8am@ Hayfield



**This Week
3.5.17**



Breaking Barriers to God; Building Bridges to one another; Blessing Others by serving.

F.Y.I.



Web: www.crossroadschurcheff.org
 E-mail: pastor@crossroadschurcheff.org
 Pastor's Cell: 912-441-0004
 Office: 912-754-3443

We are so glad to see you! So we will know, we would love for you to complete a communication card. You can share concerns for prayer on there as well. Place that in the bucket on the round table! The round table is where we receive financial gifts we call tithes and offerings. All gifts are tax deductible. Please use an envelope for a year-end record. There is also a tablet for your debit card. During our service we will observe the Lord's Super. This is open to all who claim Christ as their Savior and Lord. This is also the time when our kids and teens are dismissed for age appropriate learning and fun. Typically our service is an hour-30 to an hour45 minutes in length. Please take notes or not! I trust you will **not** be bored, Relax!

George Pabst, lead Pastor

Series: 40 Journey

D _____

⁵¹ As the time approached for him to be taken up to heaven, Jesus resolutely set out for Jerusalem. Luke 9:51 NIV

R _____

R _____ **B** _____

F _____

"You unbelieving and rebellious generation! How long will I be with you and put up with you? Luke 9:41 HCSB

O _____

⁵² And he sent messengers on ahead, who went into a Samaritan village to get things ready for him; ⁵³ but the people there did not welcome him, because he was heading for Jerusalem. Luke 9:52-53 NIV

I _____

⁵⁴ When the disciples James and John saw this, they asked, "Lord, do you want us to call fire down from heaven to destroy them?"

⁵⁵ But Jesus turned and rebuked them, ⁵⁶ and they went to another village. Luke 9:54-56 NIV

D _____

S _____, **S** _____, **S** _____

⁵⁷ As they were walking along the road, a man said to him, "I will follow you wherever you go." ⁵⁸ Jesus replied, "Foxes have holes and birds of the air have nests, but the Son of Man has no place to lay his head."

D _____

⁵⁹ He said to another man, "Follow me." But the man replied, "Lord, first let me go and bury my father."

⁶⁰ Jesus said to him, "Let the dead bury their own dead, but you go and proclaim the kingdom of God."

F _____

⁶¹ Still another said, "I will follow you, Lord; but first let me go back and say good-bye to my family."

⁶² Jesus replied, "No one who puts his hand to the plow and looks back is fit for service in the kingdom of God." Luke 9:57-62 NIV

¹⁸ "If the world hates you, remember that it hated me first. ¹⁹ The world would love you as one of its own if you belonged to it, but you are no longer part of the world. I chose you to come out of the world, so it hates you. John 15:18-19 NLT

- Resolve to _____ vertically (the Kingdom of God) and not horizontally (of this world).
- Resolve to "_____ the Kingdom."
- Resolve to face the current and continue period _____ to the end.
- Resolve to _____ Jesus.

So don't you think God will surely give justice to his chosen people who cry out to him day and night? Will he keep putting them off? ⁸ I tell you, he will grant justice to them quickly! But when the Son of Man returns, how many will he find on the earth who have faith?" Luke 18:7-8 NLT

Let's pray!

Financial 411!	JAN '17
Monthly Budget	\$4,937.95
Actual Gifts	\$5,176.50
Monthly shortfall/surplus	\$238.55
2017 Budget YTD	\$4,937.95
2017 Actual YTD	\$5,176.50
Budget shortfall	\$238.55