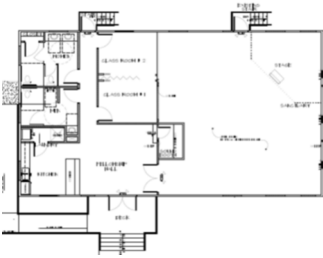


We are finishing for our mechanical inspections: electrical, plumbing and HVAC. Three more disconnects and we make the call!



**Our next Saturday Work day will be June 17th.**

**Road Trip!**

July 8 & 9

Prepare two meals for camp counselors between camp sessions.

Interested? More info on the round table and a sign-up sheet or turn in a communication card and we will contact you!



We can always use more helpers! If you will help use a communication card or contact **Brandy Dixon!** Care Givers:

6.11.17 Britt/Gary  
6.18.17 Barbara



**Monday's at the Mission**

The first one is June 12th. 9am-Noon @God's Mission



House

On the campus of FBC Springfield (behind the power lines)

We will be serving others this summer!

**A Crop Day Tuesday at the Mars 2pm and \$2. Meet at the Mars!**

**Camp Crossroads Thursday June 15 thru Saturday June 17, 2017**

ALL Kids K-6 Information and registration materials are on the table by the door!

**LEADERS MEET TODAY FOLLOWING WORSHIP!**

Craft Supplies Needed!

- Toilet Paper Tubes
- Paper Towel Tubes
- 2 Liter clear bottles with caps
- Small/Medium cracker/cereal boxes
- Tin Cans up to medium size (soup/vegetable)



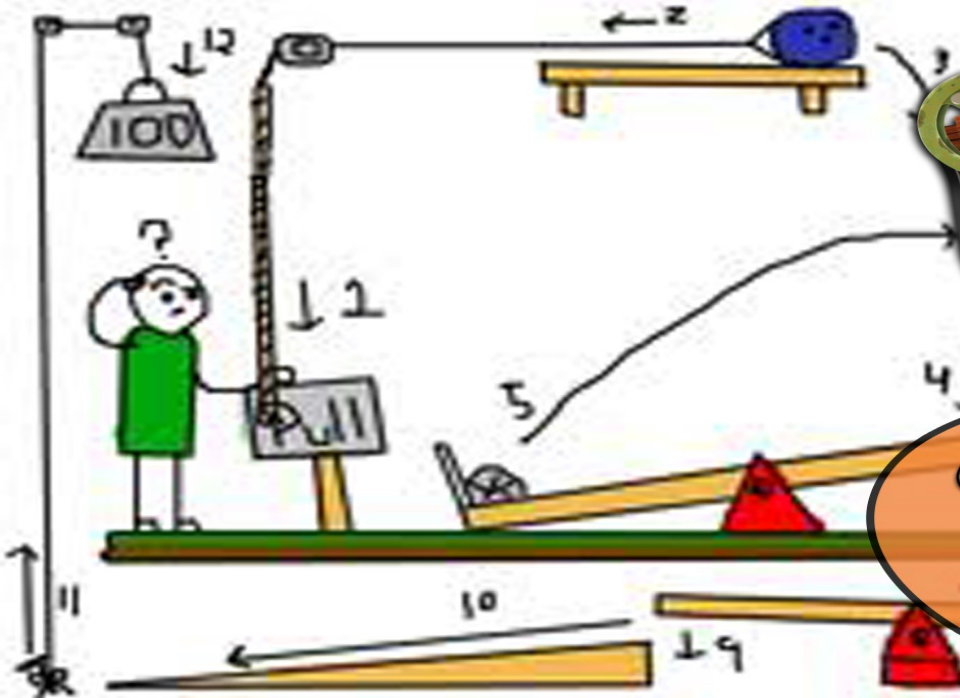
**F.Y.I.**

- Sunday
- Monday
- Tuesday
- Wednesday
- Thursday
- Friday
- Saturday

<b>Crossroads gathers to Celebrate Life.....</b>	10am	@ Tabernacle
Monday's at the Mission Campus Crop.....	9-Noon	@ GMH
Coffee Break Prayer.....	10am	@ Archer Home
Campus Crop Day At the Mars "Trolls" ...\$2.....	2pm	@ Springfield
NO Real Band Practice.....		@ Tabernacle
<b>Maker Fun Factory VBS registration.....</b>	6pm	@ Tabernacle
Maker Fun Factory VBS continues		
Maker Fun Factory VBS continues with Finale.....	4pm	@ Tabernacle
Raising the building .....	8am	@ Hayfield



**This Week 6.11.17**



**Come Join Us June 15-17**

[www.crossroadschurcheff.org](http://www.crossroadschurcheff.org)

**Breaking Barriers to God; Building Bridges to one another; Blessing Others by serving.**



Web: [www.crossroadschurcheff.org](http://www.crossroadschurcheff.org)  
 E-mail: [pastor@crossroadschurcheff.org](mailto:pastor@crossroadschurcheff.org)  
 Pastor's Cell: 912-441-0004  
 Office: 912-754-3443

We are so glad to see you! So we will know, we would love for you to complete a communication card. You can share concerns for prayer on there as well. Place that in the bucket on the round table! The round table is where we receive financial gifts we call tithes and offerings. All gifts are tax deductible. Please use an envelope for a year-end record. There is also a tablet for your debit card. During our service we will observe the Lord's Super. This is open to all who claim Christ as their Savior and Lord. This is also the time when our kids and teens are dismissed for age appropriate learning and fun. Typically our service is an hour-30 to an hour45 minutes in length. Please take notes or not! I trust you will **not** be bored, Relax!

*George Pabst, lead Pastor*

## Series: Work @ Home

**R**

<sup>2</sup> "I am the LORD your God, who brought you out of Egypt, out of the land of slavery.

<sup>3</sup> "You shall have no other gods before me. Exodus 20:2-3 NIV

<sup>12</sup> "Honor your father and your mother, so that you may live long in the land the LORD your God is giving you. Exodus 20:12 NIV

**R**

Dictionary .com defines revere as to regard with respect tinged with awe; Honor is a synonym of revere. The awe of who they are. You who fear the LORD, praise him! All you descendants of Jacob, honor him! Revere him, all you descendants of Israel! Psalm 22:23 NIV

*Hallelujah! You who serve God, praise God! Just to speak his name is praise!*

*Just to remember God is a blessing—now and tomorrow and always. Psalm 113:1-2 MSG*

**Do we \_\_\_\_\_ by use of His \_\_\_\_\_?**

**E**

Dictionary. Com defines esteem: to regard highly or favorably; regard with respect or admiration.

**If you can't say something \_\_\_\_\_ then don't say \_\_\_\_\_ at all.**

**S**

<sup>21</sup> The LORD God made garments of skin for Adam and his wife and clothed them. Genesis 3:21 NIV  
 the Son of Man did not come to be served, but to serve, and to give his life as a ransom for many." Matthew 20:28 NIV

**There is no clearer sign of \_\_\_\_\_ than to serve \_\_\_\_\_.**

**P**

...we know that suffering produces perseverance; <sup>4</sup>perseverance, character; and character, hope. <sup>5</sup>And hope does not disappoint us, because God has poured out his love into our hearts by the Holy Spirit, whom he has given us. Romans 5:3-5 NIV

**No, respect requires \_\_\_\_\_ and perseverance that builds \_\_\_\_\_ and \_\_\_\_\_.**

**E**

**If there is no \_\_\_\_\_ then there is no \_\_\_\_\_.**

**C**

'Love your neighbor as yourself Matthew 22:39 NIV

**Consideration of \_\_\_\_\_ thoughts and feelings is a sign of \_\_\_\_\_ and \_\_\_\_\_.**

**T**

A gentle answer turns away wrath, but a harsh word stirs up anger. Proverbs 15:1 NIV

**\_\_\_\_\_ we say it is more important than \_\_\_\_\_ we say!**

**\_\_\_\_\_ it! \_\_\_\_\_ it!**

*What a person plants, he will harvest. The person who plants selfishness, ignoring the needs of others—ignoring God!—harvests a crop of weeds. All he'll have to show for his life is weeds! But the one who plants in response to God, letting God's Spirit do the growth work in him, harvests a crop of real life, eternal life.*

Galatians 6:7-8 MSG

**Let's Pray**

Financial 411!	MAY '17
Monthly Budget	\$4,937.95
Actual Gifts	\$4,649.00
<b>Monthly shortfall/surplus</b>	<b>(\$288.95)</b>
2017 Budget YTD	\$24,689.75
2017 Actual YTD	\$24,757.50
<b>Budget shortfall</b>	<b>\$67.75</b>